

# isocheck™

## ReVerb EasyFix

One of the **isomass**  
systems range



### SELF ADHESIVE ABSORPTION PANELS FOR CEILINGS AND WALLS

- New build
- Conversions
- Upgrades to reduce reverberation

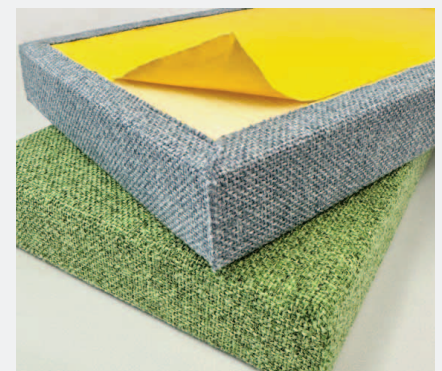


#### DESCRIPTION

- ❑ Isocheck ReVerb EasyFix is a lightweight sound absorbing wall and ceiling panel.
- ❑ The panels are manufactured from a high technology acoustic foam which ensures pleasant room acoustics. Available in natural light grey colour or covered using a variety of fabric facings with a range of 50 colours.
- ❑ Isocheck ReVerb EasyFix panels have a self-adhesive backing which makes it simple and quick for installation. See installation guide for full details
- ❑ Isocheck ReVerb EasyFix panels reduce reverberated noise for the necessary compliance of Approved Document E of the building regulations and BB93 for schools.

#### BENEFITS

- ❑ High sound absorption - "CLASS A"
- ❑ Self adhesive Peel & Stick
- ❑ Very lightweight and easy to install.
- ❑ BB93 compliant for use in schools.
- ❑ Flame resistant
- ❑ Available in 50 fabric colours or in a natural light grey



Taking the *mystery* out of Acoustics

**isocheck™**  
acoustic insulating products

## Product data:

Isocheck ReVerb EasyFix	The panels are available in any size up to a maximum size of 2400 x 1200 with a thickness of 40mm.
Weight (nominal)	2.0kg/m <sup>2</sup>
Acoustic Performance	Class A
Core:	Open-cell foam
Finish:	Natural Grey or fabric finish

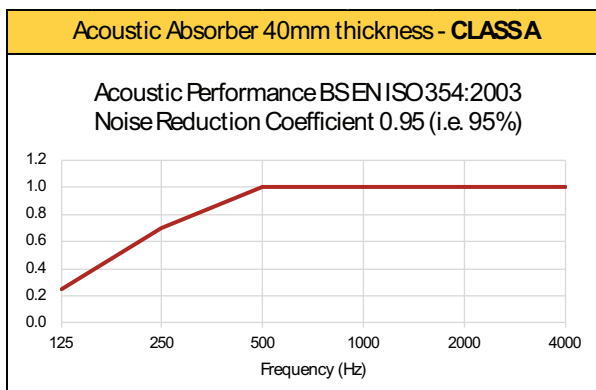
## Description:

Isocheck ReVerb EasyFix panels allow you to design and create sizes, shape and colours to your bespoke design. With the largest sheet size of 2400 x 1200, you can have any shape within 2400 x 1200 which is cut to the size required and then fabricated to suit the design required.

## Typical project application

Isocheck ReVerb EasyFix panels are commonly used to provide compliance with approved document E by reducing reverberated noise in communal areas such as stairwells, lobbies and hallways.

## Performance:



Directly fixed to wall or ceiling

## Fire:

Fire test data is available from Isomass. Please contact us for details.

## Cleaning:

Light dirt marks may be removed by using a proprietary carpet spot cleaner. A small area should be tested before doing the rest of the area to ensure that the fabric is not adversely affected.

## Cutting:

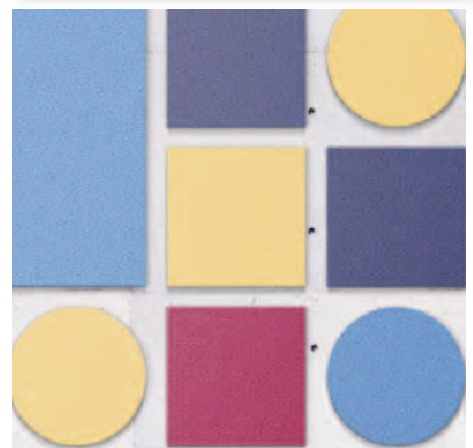
Isocheck ReVerb EasyFix panels can be cut with a sharp Stanley knife.

Every effort has been taken in the preparation of this sheet to ensure the accuracy of representations contained herein. Recommendations as to the use of materials, construction details and methods of installation are given in good faith and relate to typical situations. However, every site has different characteristics and reliance should not be placed upon the foregoing recommendations. Advice can be given as to specific applications of the products, upon request to Isomass Ltd.

## SPECIFICATION

The acoustic ceiling shall be:

- ❑ Isocheck ReVerb EasyFix, supplied by Isomass Ltd. Unit 14 Papworth Business Park, Stirling Way, Papworth Everard, Cambridgeshire CB23 3GY and installed in accordance with manufacturer's instructions / recommendations.
- ❑ Sound absorption to common areas in buildings containing multiple dwellings such as flats is covered in guidance within Approved Document E of the building regulations and BB93 for schools.
- ❑ Isocheck ReVerb EasyFix panels are ideally used in areas such as community halls, schools, offices, village halls, class rooms, church halls, restaurants etc.
- ❑ Quick and easy installation - see separate installation guide for details



## CARA fabric range



Natural foam finish (Not fabricated)



Vit EJ184



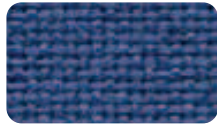
Glass EJ004



Dolphin EJ105



Galilee EJ125



Adriatic EJ154



Inverness EJ175



Lead EJ104



Spray EJ033



Lomond EJ192



Austen EJ173



Beltane EJ193



Shetland EJ191



Lossie EJ197



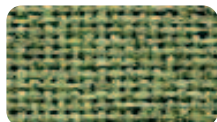
Tummel EJ038



Pitlochry EJ076



Maree EJ195



Fairisle EJ186



Staffa EJ185



Lora EJ187



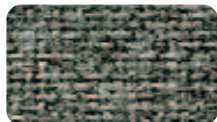
Ronay EJ189



Easdale EJ188



Walten EJ011



Portland EJ016



Merrick EJ048



Chaucer EJ172



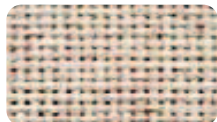
Hillswick EJ190



Denny EJ196



Black EJ138



Clan EJ169



Carron EJ015



Lerwick EJ194



Cluanie EJ180

## SONUS fabric range



Voice FHR02



Audio FHR06



Melody FHR07



Soul FHR13



Beat FHR03



Song FHR01



Pop FHR09



Acoustic FHR12



Chorus FHR17



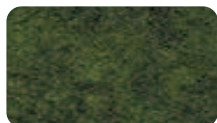
Verse FHR16



Amp FHR05



Music FHU04



Vocal FHU08



Chime FHU10



Rap FHU11



Classical FHU14



Lyric FHU15

Sonus fabric range is only available for square and rectangle panels.